

2020

CATALOG



DYNAMIC

TABLE OF CONTENTS

02 - 04 - BRAND STATEMENT

05 - 06 - FABRIC GUIDE

07 - 08 - CUSTOMIZATION

09 - 14 BASEBALL

15 - 20 FAST PITCH

21 - 26 FOOTBALL

27 - 34 BASKETBALL

35 - 40 SOCCER

41 - 46 MEN'S LACROSSE

47 - 52 FIELD HOCKEY

53 - 60 TRACK & FIELD

61 - 68 VOLLEYBALL

69 - 74 WRESTLING

75 - 80 ICE HOCKEY

DYNAMIC UNIFORMS ARE AVAILABLE IN:

YS-YXL AND AS-AXXXL SIZING. DYNAMIC OFFERS ATHLETIC AND RELAXED FITS

* Please contact our sales team for any assistance regarding uniform sizing, availability and or uniform pricing.



Dynamic

(adj.) constant change or progress, positive energy and new ideas.

(noun.) a force that stimulates change within a system.

GREAT ATHLETES ARE TWO THINGS: ADAPTABLE AND RELIABLE.



WHY SHOULD YOUR UNIFORM BE ANYTHING ELSE?

Our cuts are expertly constructed to unleash a player's strength, agility, and speed. Our unparalleled customization in design captures the spirit of the team.

ADAPABILITY. Dynamic offers the highest level of customization in the industry. As a Dynamic dealer, you are able to flex and bend with the needs of each individual customer. Rather than containing your teams to rigid templates, we help you offer them a quality of design that sets them apart.

RELIABILITY. Our uniforms are constructed with a focus on technical performance and durability. In rain or shine, in practice rounds or game time, in the first season or in the last, our pro-quality fabrics and garment construction are built to last.

OUR COMMITMENT TO YOUR BUSINESS IS STRONGER THAN EVER IN 2020, AND WE LOOK FORWARD TO BEING A PARTNER IN YOUR SUCCESS.

DYNAMIC FABRICS

DYNAMIC

PERFORMANCE READY

MOISTURE WICKING

LIGHT WEIGHT

HIGH DETAIL

FLEXIBLE



BASE

PREMIUM

DYNA DRY 

A FLAT-BACKED MOCK MESH. MOISTURE WICKING PERFORMANCE FABRIC.
(100% POLYESTER)

DRY TEC 

LIGHTWEIGHT, MICROFIBER FABRIC WITH A SMOOTH, FLAT FACE. WRINKLE RESISTANT AND MOISTURE WICKING. (100%)

HIGH QUALITY. HIGH FLEXIBILITY.

Each team you serve is unique, from their climate and length of play to budget and style preference. Our variable fabric choices allow you to bend and flex with their preferences.

CUSTOM SUBLIMATION

UNLIMITED DESIGNS

VIBRANT COLORS

HIGH DETAIL

DURABLE

ULTRA

AEROFIBER

LIGHT WEIGHT, STRETCHABLE AND
BREATHABLE, OPEN PIN HOLE MESH.
MOISTURE WICKING, FOUR-WAY
STRETCH, PERFORMANCE FABRIC.
(90% POLYESTER / 10% SPANDEX)

ULTRA

FLEX DRY

LIGHT WEIGHT, BREATHABLE, TWO-WAY
STRETCH WITH MOISTURE MANAGEMENT.
(90% POLYESTER / 10% SPANDEX)

TRUE CUSTOMIZATION



While other uniforms are restrained by lackluster colors and rigid design structures, we have set out to free teams from the bounds of templates. Uniforms that are **TRULY** custom should know no bounds of the imagination when it comes to fusing a team's identity into fabric.

A 360° BLANK CANVAS FOR TEAM IDENTITY

DYNAMIC

BLANK CANVAS DESIGN
BY PROFESSIONAL SUBLIMATION ARTISTS

MODERN FABRICATION

HIGH-QUALITY FABRICS

LIFELONG DURABILITY



Our staff of professional artists work with team leaders to add creative design details, unique logos placements, custom locker tags and more. Dynamic athletes can create a truly unique uniform that will leave other team's asking "where'd you get that?"

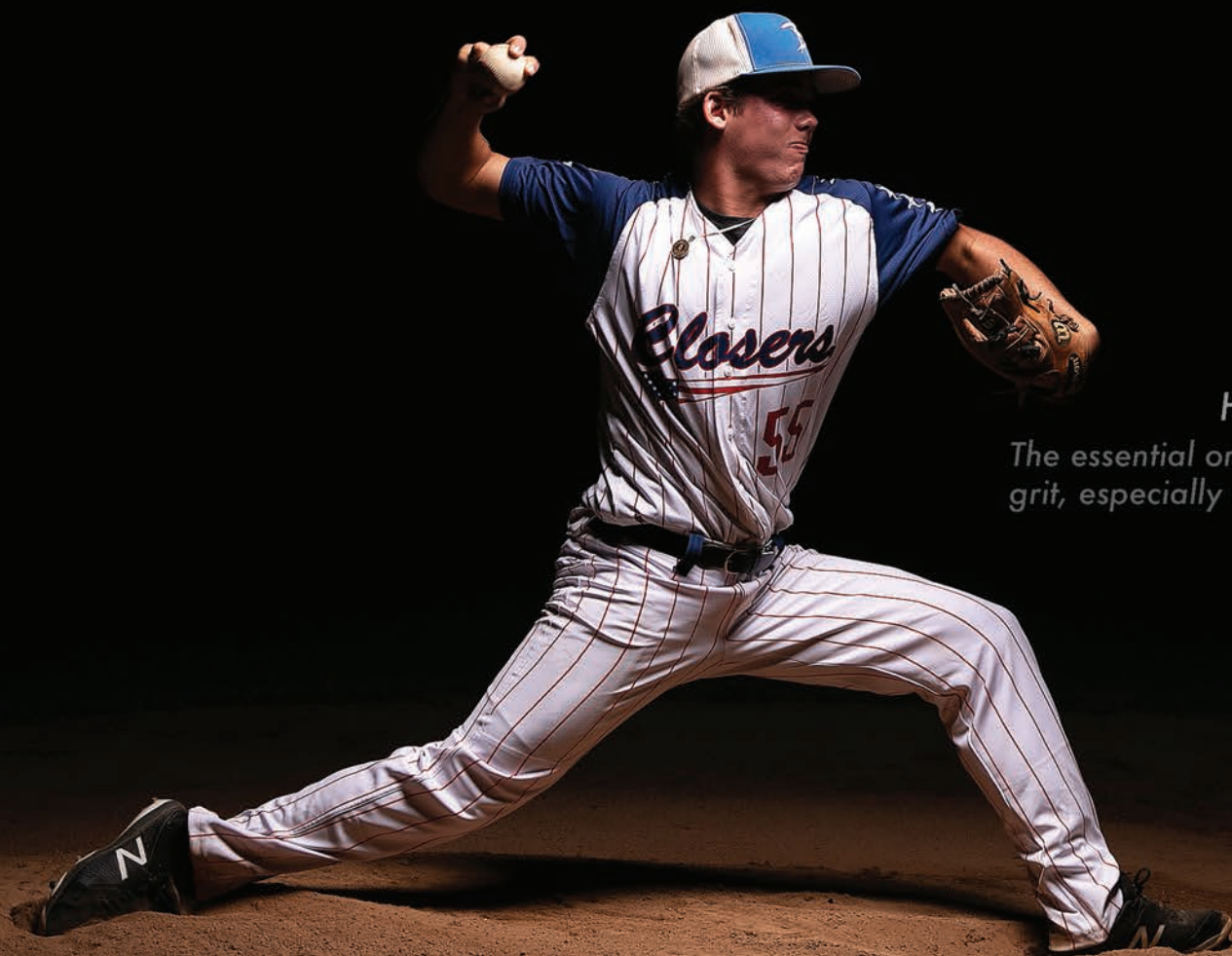




DYNAMIC

BASEBALL

“EVERY STRIKE BRINGS ME CLOSER TO THE NEXT HOME RUN.” - BABE RUTH



Heart. noun \ 'härt \

The essential or most vital part of something. Courage or grit, especially when it is maintained during strenuous or difficult times.

BASEBALL | Designed for players who give it their all, in beating sun or pouring rain. Every baseball uniform is hand sewn with durable fabrics that are built to last for teams that don't stop at just one season.



RAGLAN FULL BUTTON (BS531)

REINFORCED RAGLAN SLEEVES / SCOOP TAIL / FULLY FACED FULL BUTTON FRONT

FULL LENGTH PANT

TUNNEL BELT LOOPS / ZIPPER FLY / DOUBLE KNEE CONSTRUCTION
TWO DOUBLE WELT BACK POCKETS

STYLE NAME:

“THE CLASSIC” I

Baseball trends are taking it back to the old school with classic pinstripes and simple layouts. Bring classic designs into 2020 by customizing it with matte neon colors or unique logo treatments.

MENS BASEBALL STYLES



RAGLAN 2 BUTTON
(BS050)

- " RAGLAN SLEEVES
- " SCOOP TAIL
- " FULLY LACED 2-BUTTON PLACKET



RAGLAN FULL BUTTON
(BS531)

- " RAGLAN SLEEVES
- " SCOOP TAIL
- " FULLY FACED FULL BUTTON FRONT



SET IN 2 BUTTON
(BS052)

- " SELF FABRIC 2 BUTTON PLACKET
- " SET IN SLEEVES
- " STRAIGHT HEMMED BOTTOM



SET IN SLEEVE FULL BUTTON
(BS053)

- " SET IN SLEEVES
- " SCOOP TAIL
- " FULLY FACED FULL BUTTON FRONT



FULL LENGTH PANTS
(BS050)

- " DOUBLE KNEE CONSTRUCTION
- " 2 DOUBLE WELTED BACK POCKET
- " 2 SNAP CLOSURE



SET IN NO BUTTON (CREW NECK)
(BS605, BS606)

- " PERFORMANCE FIT T-SHIRT
- " SET-IN SLEEVES
- " AVAILABLE IN CREW OR V-NECK



SET IN NO BUTTON (V-NECK)
(BS607, BS608)

- " RELAXED FIT
- " SET-IN SLEEVES
- " STRAIGHT HEMMED BOTTOM
- " AVAILABLE IN CREW OR V-NECK



KNICKER PANTS
(BS050)

- " 2 SNAP FLY
- " ELASTIC BOTTOMS

STYLE OPTIONS |

CHOOSE FROM OUR LINE OF FULLY-SUBLIMATED JERSEY AND PANTS CUTS, AVAILABLE IN YOUR CHOICE OF FOUR BEST-IN-CLASS FABRICS. CONSTRUCTED WITH PERFORMANCE ENHANCEMENT AND YEAR-ROUND DURABILITY IN MIND.



DIAMOND
(BS531)
FULL BUTTON
RAGLAN

COLOR 1: BLACK
COLOR 2: RED
COLOR 3: WHITE

DIAMOND
(BS610)
FULL LENGTH
PANTS



COLOR 1: BLACK
COLOR 2: RED
COLOR 3: BLACK



CAMDEN
(BS050)
RAGLAN 2
BUTTON

COLOR 1: CARDINAL
COLOR 2: BLACK
COLOR 3: SILVER



LEGACY
(BS052)
2 BUTTON SET IN

COLOR 1: NAVY
COLOR 2: GOLD
COLOR 3: SILVER
COLOR 4: WHITE



HEATER
(BS053)
FULL
BUTTON

COLOR 1: NAVY
COLOR 2: SILVER
COLOR 3: SKY



**AMERICAN
2**
(BS606)
V-NECK THROW-
BACK

COLOR 1: BLACK
COLOR 2: 75% BLACK
COLOR 3: WHITE



ASTROS
(BS608)
GAMETEE

COLOR 1: SILVER
COLOR 2: NAVY
COLOR 3: RED
COLOR 4: WHITE



SLUGGER
(BS050)
2 BUTTON
RAGLAN

COLOR 1: WHITE
COLOR 2: BLACK
COLOR 3: RED

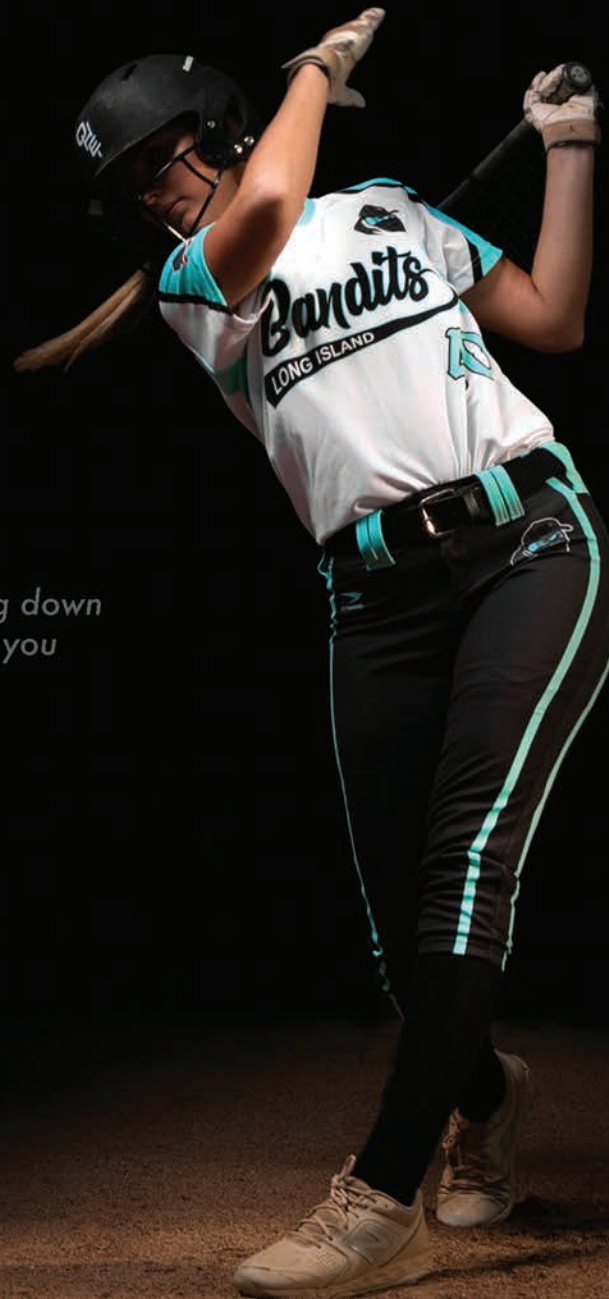
CUSTOMIZE IT | THESE STYLES AND MORE ARE AVAILABLE AT WWW.DYNAMICTEAMSPORTS.COM, COMPLETELY CUSTOMIZED TO MATCH YOUR VISION.



DYNAMIC

FASTPITCH

"TO SOME SOFTBALL IS A GAME; TO OTHERS IT'S LIFE." -JENNIE FINCH



GRIND. verb /Grīnd/

To commit hard work. To break something down into smaller and smaller components until you crush it.

FAST PITCH | While other uniforms allow for customization within barriers, our possibilities are limitless. Custom belt loops, locker tags, and piping are just a few of the options elite teams can add to their creation.

SET IN 2 BUTTON (SB66W)

SET IN SLEEVES / STRAIGHT HEMMED BOTTOM /
SELF FABRIC 2-BUTTON PLACKET

"SINGLE" KNICKER PANT (SB61W)

BAR TACKED TUNNEL BELT LOOPS / METAL ZIPPER FLY WITH 2 SNAP CLOSURE
DOUBLE KNEE CONSTRUCTION / 2 DOUBLE WELTED BACK POCKETS

STYLE NAME:

"SINGLE" |

Available in youth and adult sizing, an unrivaled selection of light weight, breathable fabrics, and an infinite array of designs.

WOMEN'S FASTPITCH STYLES



SET IN SLEEVE FULL BUTTON
(SB53W)

- FULLY FACED FULL BUTTON FRONT
- SET-IN SLEEVES
- SCOOP TAIL



SET IN 2 BUTTON
(SB50W)

- SELF FABRIC 2-BUTTON PLACKET
- SET-IN SLEEVES
- STRAIGHT HEMMED BOTTOM



RAGLAN FULL BUTTON
(SB56W)

- FULL BUTTON FACING AT CENTER FRONT
- RAGLAN SLEEVES
- SCOOP TAIL



RAGLAN FULL BUTTON
(SB54W)

- FULLY FACED FULL BUTTON FRONT
- BUTTONS SPACED 4" APART FOR LETTERING
- CURVED HEMMED BOTTOM



SLEEVELESS 2 BUTTON
(SB51W)

- 2-BUTTON PLACKET
- STRAIGHT HEMMED BOTTOM



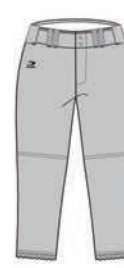
SLEEVELESS
(SB52W, SB58W, SB55W)

- AVAILABLE IN CREW NECK, V-NECK, TANK OR RACERBACK
- STRAIGHT HEMMED BOTTOM
- SINGLE COLOR BINDING OPTION FOR ARMHOLES



GAME TEE
(SB67W, SB68W)

- AVAILABLE IN CREW OR V-NECK
- RELAXED FIT
- SET-IN SLEEVES
- STRAIGHT HEMMED BOTTOM



KNICKER PANT

- BAR TACKED TUNNEL BELT LOOPS
- METAL ZIPPER FLY
- DOUBLE KNEE CONSTRUCTION
- 2 DOUBLE WELTED BACK POCKETS



RAGLAN 2 BUTTON
(SB57W)

- BAR TACKED TUNNEL BELT LOOPS
- METAL ZIPPER FLY
- DOUBLE KNEE CONSTRUCTION
- 2 DOUBLE WELTED BACK POCKETS

STYLE OPTIONS | FOCUSED ON SUPPORTING POWER AND OPTIMIZING MOVEMENT, OUR CUTS ARE CREATED TO COMPLIMENT DIFFERENT BUILDS WHILE REPRESENTING THE SPIRIT OF THE TEAM THROUGH DESIGN.

SINGLE
(SB66)
V-NECK
THROWBACK

COLOR 1:
GOLD

COLOR 2:
BLACK

COLOR 3:
SILVER



SINGLE
(SB61W)
KNICKER PANT

COLOR 1:
BLACK

COLOR 2:
GOLD

COLOR 3:
SILVER



STRIKEOUT

(SB53W)
FULL BUTTON
SET IN

COLOR 1:
BLACK

COLOR 2:
RED



BASE

(SB53W)
FULL BUTTON
SET IN

COLOR 1:
NAVY

COLOR 2:
85% NAVY

COLOR 3:
50% BLACK

COLOR 4:
WHITE



SERIES

(SB51W)
2 BUTTON
SLEEVELESS

COLOR 1:
RED

COLOR 2:
BLACK

COLOR 3:
WHITE



COLOR 1:
GOLD

COLOR 2:
NAVY

COLOR 3:
WHITE



FIELDER

(SB56W)
FULL BUTTON
RAGLAN

COLOR 1:
WHITE

COLOR 2:
RED

COLOR 3:
NAVY



HOMER

(SB68W)
GAME TEE

COLOR 1:
WHITE

COLOR 2:
GOLD

COLOR 3:
PURPLE

CUSTOMIZE IT | THESE STYLES AND MORE ARE AVAILABLE AT WWW.DYNAMICTEAMSPORTS.COM TO BE COMPLETELY CUSTOMIZED TO MATCH YOUR VISION



DYNAMIC

FOOTBALL

"ABILITY IS WHAT YOU'RE CAPABLE OF DOING. MOTIVATION DETERMINES WHAT YOU DO.
ATTITUDE DETERMINES HOW WELL YOU DO IT."-LOU HOLTZ

POWER / noun / 'pou(e)r/

The application of great strength. A supernatural force. The ability to influence the attitudes and beliefs of those around you.

FOOTBALL | The look of the game is changing. Uniforms are no longer just about protecting the body. They are about the binding unity of the team and the legacy of the program.

RAGLAN SLEEVES W/ V-NECK (FB663)

SINGLE FABRIC / FORM FITTING CONSTRUCTION / SELF FABRIC V-NECK

SKILLS (FB663)

SUBLIMATED PRINTING

STYLE NAME:

“THE FUMBLE”

Our athletic, form fitting cut is available in men's or youth sizing, features double shoulders and a three-needle finish for increased durability, and is available in several durable yet lightweight fabrics.

FOOTBALL STYLES

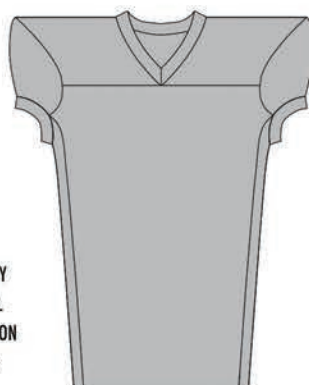
SKILLS (FB663)

- MULTI FABRIC DESIGN
- CONTOURED YOKE
- SEWN IN PIPING
- SIDE PANELS
- V-NECK AND ARM TRIM



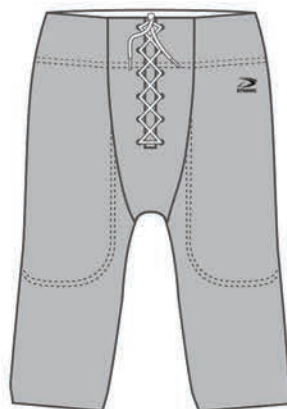
LINEMAN (FB661)

- DUAL FABRIC CAPABILITY
- 4" SEWN-IN SIDE PANEL
- RELAXED FIT CONSTRUCTION
- KNIT MITERED V-NECK AND ARM TRIM



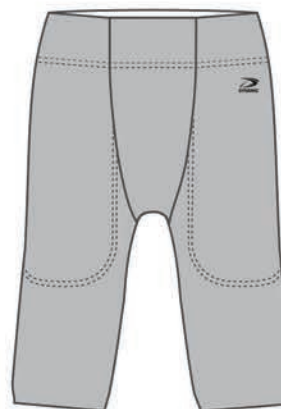
RAGLAN (FB662)

- SINGLE FABRIC UNIFORM OPTION
- FORM FITTING CONSTRUCTION
- SELF-FABRIC OR KNIT MITERED V-NECK AND ARM TRIM



LACE FRONT PANTS

- DRAWSTRING AT CENTER FRONT GUSSET
- 2.5" ELASTIC INSIDE WAIST
- FLATLOCK SEAM CONSTRUCTION
- ALSO AVAILABLE WITH 3" SIDE PANEL



FLAT FRONT PANTS

- FLAT FRONT GUSSET
- 2.5" ELASTIC INSIDE WAIST
- CENTER FRONT GUSSET
- FLATLOCK SEAM CONSTRUCTION
- WAISTBAND SLITS FOR BELT

STYLE OPTIONS | OUR CUTS ALLOW FOR THE HIGHEST LEVEL OF CUSTOMIZATION, UNLEASHING A TEAM'S SPIRIT THROUGH SUBLIMATED FABRIC WITHOUT SACRIFICING QUALITY TECHNICAL CONSTRUCTION.

FUMBLE
(FB662)
RAGLAN

COLOR 1:
BLACK

COLOR 2:
RED

COLOR 3:
WHITE



VICTORY
(FB663)
SKILLS

COLOR 1:
BLACK

COLOR 2:
RED

COLOR 3:
WHITE



**ADVER-
SARY**
(FB663)
SKILLS

COLOR 1:
BLACK

COLOR 2:
GOLD

COLOR 3:
SILVER

COLOR 3:
BLACK



RUSH
(FB662)
RAGLAN

COLOR 1:
GOLD TO

COLOR 2:
WHITE TO

COLOR 3:
GOLD



ATTACK
(FB663)
SKILLS

COLOR 1:
ORANGE

COLOR 2:
DOT CAMO

COLOR 3:
BLACK



**STREAM-
ER**
(FB662)
RAGLAN

COLOR 1:
TEAL

COLOR 2:
ORANGE



LATERAL
(FB662)
RAGLAN

COLOR 1:
BLACK

COLOR 2:
SILVER

COLOR 3:
WHITE

CUSTOMIZE IT | THESE STYLES AND MORE ARE AVAILABLE AT WWW.DYNAMICTEAMSPORTS.COM TO BE COMPLETELY CUSTOMIZED TO MATCH YOUR VISION



DYNAMIC

BASKETBALL

“TALENT WINS GAMES, BUT TEAMWORK AND INTELLIGENCE WINS CHAMPIONSHIPS.” - MICHAEL JORDAN

ELEVATION/noun/Eel'evāSH(e)n/

The action of advancement. A height above your previous level. Rising up to a higher place, to a position of respect or even adoration.



WOMEN'S BASKETBALL |

Our cuts are created to allow versatility in design. From artwork that stretches from leg to leg or oblique designs that wrap around the player, the sky is the limit when it comes to creativity in style.



" GAME " TRADITIONAL JERSEY (BB100)

FLATLOCK SEAM CONSTRUCTION / 4" SIDE PANEL INSERTS /
V-NECK OR FUSION NECK AVAILABLE / SINGLE OR DOUBLE PLY / REVERSABLE AVAILABLE

FULL CUT SHORTS (BB604)

IDEAL FOR LARGE ARTWORK / 2" COVERED ELASTIC WAISTBAND WITH DRAW STRING
/ 7" , 9" AND 11" INSEAM LENGTHS AVAILABLE

STYLE NAME:

"DASHER" |

Fabrics that are lighter than air set Dynamic basketball uniforms apart from the competition. Choosing between 5 different fabrics in variable styles and performance enhancements allows uniforms to fit any team's need and budget.



DYNAMIC

MEN'S BASKETBALL | *The game isn't just about what happens on the court; it's about the mindset. Try offering our matching custom tearaway warm-ups to your next team's basketball order—your customer will thank you.*

31



" BRICK " GAME JERSEY (BB100)

FLATLOCK SEAM CONSTRUCTION / 4" SIDE PANEL INSERTS / V-NECK OR
FUSION NECK AVAILABLE / SINGLE OR DOUBLE PLY / REVERSABLE AVAILABLE

FULL CUT SHORTS (BB601)

IDEAL FOR LARGE ARTWORK / 2" COVERED ELASTIC WAISTBAND WITH
DRAW STRING / 7" , 9" AND 11" INSEAM LENGTHS AVAILABLE

STYLE NAME:

"BRICK"

I Reach a new level of customer with the affordability of a Dynamic reversible jersey. Unique home and away designs on both sides of the cut allow for high levels of design without the investment needed for two sets.

MEN'S / WOMEN'S BASKETBALL STYLES



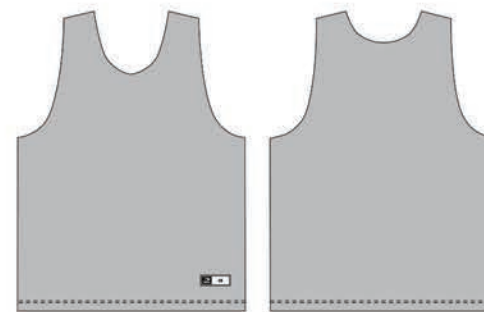
GAME
(BB100)

- FLATLOCK SEAM CONSTRUCTION
- 4" SIDE PANEL INSERTS
- V-NECK OR FUSION NECK AVAILABLE
- SINGLE OR DOUBLE PLY REVERSIBLE AVAILABLE
- ALSO AVAILABLE IN WOMEN'S



400 SERIES
(BB400)

- FLATLOCK SEAM CONSTRUCTION
- SHOULDER INSERTS
- FRONT PANEL WRAPS TO BACK
- V-NECK OR FUSION NECK AVAILABLE
- SINGLE OR DOUBLE PLY REVERSIBLE AVAILABLE
- ALSO AVAILABLE IN WOMEN'S



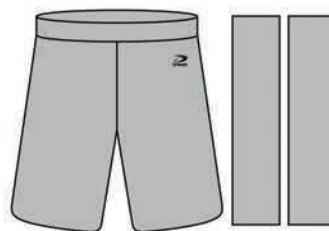
PRACTICE REVERSIBLE
(BB100)

- TWO PANELS, ROUND NECK
- FLATLOCK SAM CONSTRUCTION
- STRAIGHT HEMMED BOTTOM
- SINGLE OR DOUBLE PLY REVERSIBLE AVAILABLE
- ALSO AVAILABLE IN WOMEN'S



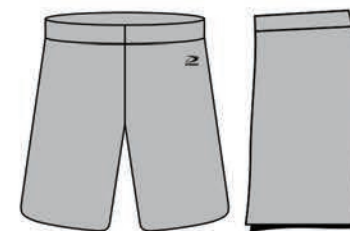
RETRO
(BB350)

- TWO PANELS, CREW NECK
- SERGED SEAM CONSTRUCTION
- NECK AND ARM TRIM
- STRAIGHT HEMMED BOTTOM
- SINGLE OR DOUBLE PLY REVERSIBLE AVAILABLE
- ALSO AVAILABLE IN WOMEN'S



150 SHORTS
(BB601)

- 4" SIDE PANELS
- 2" GRIPPER ELASTIC WAISTBAND WITH DRAWSTRING
- 5", 7", 9" AND 11" INSEAM LENGTHS AVAILABLE



FULL CUT SHORTS
(BB604)

- IDEAL FOR LARGE ARTWORK
- 2" COVERED ELASTIC WAISTBAND WITH DRAWSTRING
- 7", 9" AND 11" INSEAM LENGTHS AVAILABLE

STYLE OPTIONS | PRACTICALITY DOESN'T HAVE TO MEAN SACRIFICING QUALITY. CHECK OUT OUR EXPERTLY CRAFTED CUTS THAT ARE AVAILABLE IN REVERSIBLE HOME AND AWAY DESIGNS.



BASELINE
(BB100)
REVERSIBLE
GAME JERSEY

COLOR 1:
HUNTER



COLOR 2:
WHITE



COLOR 3:
GOLD



BACK-
(BB301)
REVERSIBLE
PRACTICE JERSEY
(BB604)
FULL CUT
SHORTS



COLOR 1: NAVY
COLOR 2: RED
COLOR 3: WHITE



COLOR 1: RED
COLOR 2: NAVY
COLOR 3: WHITE



RETRO
(BB301)
REVERSIBLE
PRACTICE JERSEY
(BB604)
FULL CUT
SHORTS



COLOR 1: WHITE
COLOR 2: TEAL
COLOR 3: PURPLE



COLOR 1: TEAL
COLOR 2: PURPLE
COLOR 3: BLACK



BASELINE
(BB604)
FULL CUT
SHORTS

COLOR 1:
HUNTER



COLOR 2:
WHITE



COLOR 3:
GOLD



FREE
(BB400)
400 SERIES
JERSEY
(BB604)
FULL CUT
SHORTS



COLOR 1: NAVY
COLOR 2: GOLD
COLOR 3: WHITE



TURNOVER
(BB100)
GAME JERSEY
(BB604)
FULL CUT
SHORTS



COLOR 1: BLACK
COLOR 2: 50% BLACK
COLOR 3: 25% BLACK
COLOR 4: TEAL



CUSTOMIZE IT | THESE STYLES AND MORE ARE AVAILABLE AT WWW.DYNAMICTEAMSPORTS.COM
TO BE COMPLETELY CUSTOMIZED TO MATCH YOUR VISION



DYNAMIC

SOCCER

“ FAILURE HAPPENS ALL THE TIME. IT HAPPENS EVERY DAY IN PRACTICE. WHAT MAKES YOU BETTER
IS HOW YOU REACT TO IT. ”- MIA HAMM



CONFIDENCE / noun / 'känfedens/

The belief in your own skill. The belief that you can rely on others in your organization. A firm trust in yourself and in those around you.

SOCCER | Footballers are found at the place where speed and precision meet, so with such a lofty position to maintain, our uniforms are built to sacrifice nothing. Cuts that won't get in the way of the player, fabrics that are lighter than air.

13**MEN'S RAGLAN JERSEY (SC006)**

RAGLAN SLEEVES / CREW NECK PERFORMANCE FIT / STRAIGHT HEMMED BOTTOM

FULL CUT SHORTIDEAL FOR LARGE DESIGN /
2" COVERED ELASTIC WAISTBAND W/ DRAW STRING

STYLE NAME:

"HEADER"

Our new Raglan Cut soccer jersey is available in a Crew or V-Neck finish. Can be ordered in any Dynamic fabric that suits your needs, is finished in a three-needle stitch for peak durability, and features a raglan sleeve for increased comfort.

MEN'S / WOMEN'S SOCCER STYLES



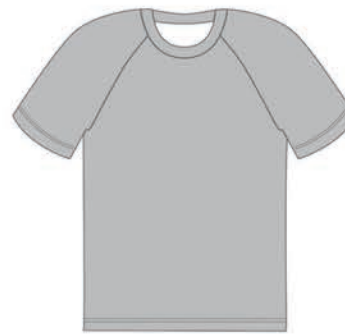
MEN'S CHAMPION FIT
(SC005)

- SERGED SEAM CONSTRUCTION
- SET IN SLEEVES
- CREW NECK ONLY
- SIDE PANELS: CAN BE MESH FABRIC



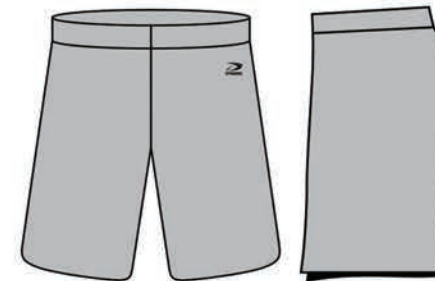
MEN'S CHAMPION FIT SHORTS
(SC002)

- SERGED SEAM CONSTRUCTION
- SET IN SLEEVES
- CREW NECK ONLY
- SIDE PANELS: CAN BE MESH FABRIC



MEN'S RAGLAN SOCCER
(SC006)

- RAGLAN SLEEVES
- CREW NECK, PERFORMANCE FIT
- STRAIGHT HEMMED BOTTOM
- SERGED SEAM CONSTRUCTION



MEN'S FULL CUT SHORTS
(BB603)

- IDEAL FOR LARGE DESIGN
- 2" COVERED ELASTIC WAISTBAND WITH DRAWSTRING
- 7" INSEAM LENGTH



WOMEN'S CHAMPION FIT
(SC04W)

- SERGED SEAM CONSTRUCTION
- SET-IN CAP SLEEVES
- NECK BINDING
- V-NECK ONLY, PERFORMANCE FIT



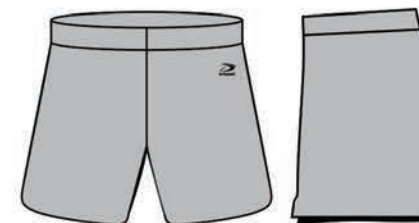
WOMEN'S CHAMPION FIT SHORTS
(SC03W)

- 4 PANEL SHORT
- CURVED SIDE SEAM
- 1.5" COVERED ELASTIC WITH DRAWSTRING WAIST
- 5" INSEAM WITH SIDE SLITS



WOMEN'S RAGLAN SOCCER
(SC03W)

- RAGLAN SLEEVES
- CREW NECK OR V-NECK
- STRAIGHT HEMMED BOTTOM
- SERGED SEAM CONSTRUCTION
- PERFORMANCE FIT



WOMEN'S FULL CUT SHORTS
(BB67W)

- IDEAL FOR LARGE DESIGN
- 2" COVERED ELASTIC WAISTBAND WITH DRAWSTRING
- 5" INSEAM LENGTH

STYLE OPTIONS | CHOOSE FROM OUR CHAMPION AND RAGLAN CUTS FOR BOTH MEN AND WOMEN, DESIGNED TO STAY TRUE TO FORM EVEN WHILE SPRINTING AT FULL SPEED.



TOUCHLINE

(SC006)
RAGLAN
SOCCER
JERSEY

COLOR 1:
GOLD



COLOR 2:
NAVY



TOUCHLINE

(BB603)
7\"/>

COLOR 1:
GOLD



COLOR 2:
NAVY



HEADER

(SC006)
RAGLAN SOCCER
JERSEY

(BB603)
7\"/>

COLOR 1: COLOR 2:



NUTMEG

(SC005)
CHAMPION FIT
SOCCER JERSEY

(BB603)
7\"/>

COLOR 1: COLOR 2: COLOR 3:



SUPPORTER

(SC005)
CHAMPION FIT
SOCCER JERSEY

(BB603)
7\"/>

COLOR 1: COLOR 2: COLOR 3:



OFFSIDE

(SC006)
RAGLAN SOCCER
JERSEY

(BB603)
7\"/>

COLOR 1: COLOR 2:



CUSTOMIZE IT | THESE STYLES AND MORE ARE AVAILABLE AT WWW.DYNAMICTEAMSPORTS.COM
TO BE COMPLETELY CUSTOMIZED TO MATCH YOUR VISION



DYNAMIC

LACROSSE

“ MOVE ON TO THE NEXT ONE. YOU CAN'T MAKE EVERY SAVE OR SCORE EVERY SHOT.
HAVE A SHORT MEMORY AND GET THE NEXT ONE. ”- JESSE SCHWARTZMAN

DETERMINATION / noun / de,terme'naSH (e)n/

Firmness of purpose. Resoluteness. Establishing something exactly by calculation and research. Controlling your own nature and outcomes.

LACROSSE | Strength. Speed. Grit. The qualities of a lacrosse player are represented in our cuts and designs, constructed with durable fabrics that withstand grueling matches.

RAGLAN SLEEVES W/ V-NECK (LX014)

3" SEWN IN SIDE PANEL / PIPING AVAILABLE ON REQUEST

TRADITIONAL SHORTS (LX061)

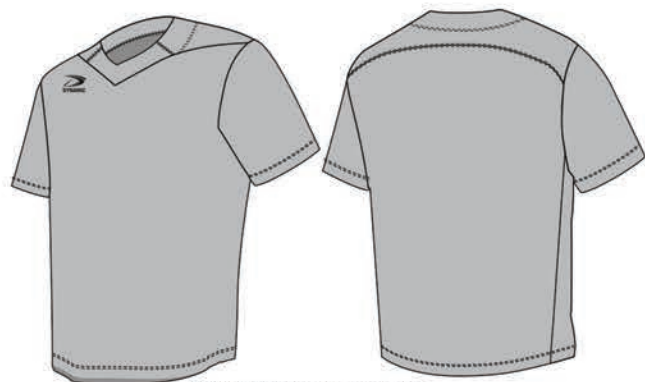
4" SIDE PANELS / 2" GRIPPER ELASTIC WAISTBAND W/ DRAW STRING
7", 9" AND 11" INSEAM LENGTHS AVAILABLE

STYLE NAME:

"TOP SHELF" I

Why compromise design on any jersey? Our reversible lacrosse jerseys are fully customizable inside and out, so your team looks sharp and formidable both home and away.

MEN'S LACROSSE STYLES



COMPETITION JERSEY
(LX011)

- SET IN SLEEVES WITH FUSION NECK
- BACK YOKE
- SERGED SEAM CONSTRUCTION



WIDE SHOULDER REVERSIBLE TANK
(LX015)

- TWO PANELS WITH SCOOP NECK
- FLATLOCK SEAM CONSTRUCTION
- STRAIGHT HEMMED BOTTOM
- WIDE ARMHOLES
- SINGLE OR DOUBLE PLY REVERSIBLE AVAILABLE



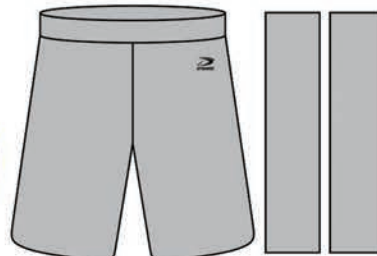
DESPARADO JERSEY
(LX014)

- RAGLAN SLEEVES WITH V-NECK
- 3" SEWN-IN SIDE PANEL
- PIPING AVAILABLE UPON REQUEST



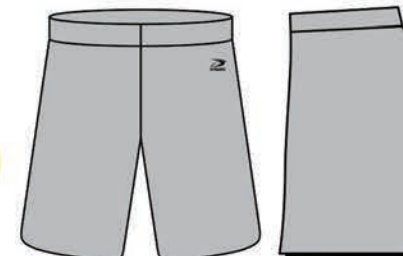
NARROW SHOULDER REVERSIBLE TANK
(LX015)

- TWO PANELS WITH SCOOP NECK
- FLATLOCK SEAM CONSTRUCTION
- STRAIGHT HEMMED BOTTOM
- WIDE ARMHOLES
- SINGLE OR DOUBLE PLY REVERSIBLE AVAILABLE



TRADITIONAL SHORTS
(LX061)

- 4" SIDE PANELS
- 2" GRIPPER ELASTIC WAISTBAND WITH DRAWSTRING
- 7", 9" AND 11" INSEAM LENGTHS AVAILABLE



FULL CUT SHORTS
(BB604)

- IDEAL FOR LARGE ARTWORK
- 2" COVERED ELASTIC WAISTBAND WITH DRAWSTRING
- 7", 9" AND 11" INSEAM LENGTHS AVAILABLE

STYLE OPTIONS | PAIR YOUR CUSTOM DESIGNED JERSEY WITH A REVERSIBLE PRACTICE TANK TO KEEP THE TEAM LOOKING SHARP AND FEELING FOCUSED BEFORE AND AFTER THE WHISTLE.

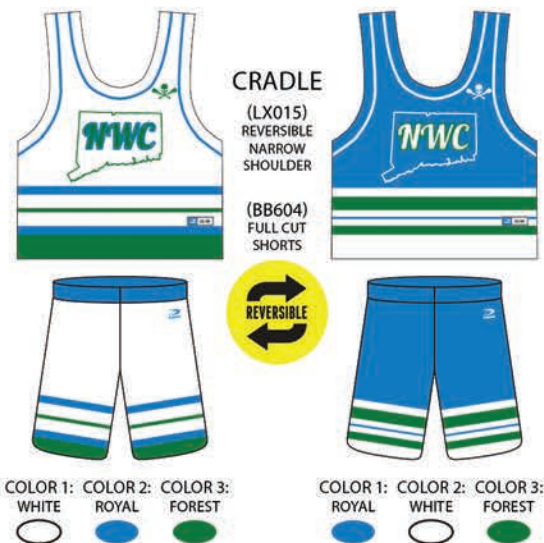
TOP SHELF
(LX011)
COMPETITION
JERSEY

COLOR 1: NAVY
COLOR 2: WHITE



TOP SHELF
(BB604)
FULL CUT
SHORTS

COLOR 1: NAVY
COLOR 2: WHITE



CUSTOMIZE IT | THESE STYLES AND MORE ARE AVAILABLE AT WWW.DYNAMICTEAMSPORTS.COM TO BE COMPLETELY CUSTOMIZED TO MATCH YOUR VISION



DYNAMIC

FIELD HOCKEY

“ ITS NOT HOW BIG YOU ARE, ITS HOW BIG YOU PLAY ” - UNKNOWN

MIGHT / noun / mit

A natural force. Great or impressive power, especially so where strength comes from numbers, or where great power is unexpected.



FIELD HOCKEY | 2020 is a year to be reckoned with in women's sports, and Dynamic field hockey and lacrosse uniforms are up to the challenge. With comfortable cuts and reversible styles, the investment in our uniform is one no team regrets.

A female hockey player in a blue and white striped jersey and skirt is in a dynamic pose, leaning forward with her hockey stick on the ice. She is wearing a white protective cage over her eyes. The background is dark, highlighting the player and the ice.

CHAMPION FIT RACER BACK (WL65W)

V-NECK / 3" SEWN-IN SIDE PANEL / PIPING AVAILABLE UPON REQUEST

CHAMPION FIT SKIRT (WL14W)

SKIRT OR SKORT - COMPRESSION SHORTS OPTIONAL /
2" FLAT COVERED ELASTIC WAISTBAND / CURVED SIDE SEAMS

STYLE NAME:

"UNDERCUT" |

Available in both racerback and scoop back, our Champion Fit jerseys add a one of a kind offering for your players—completely reversible home and away designs that don't compromise the quality of cut.

WOMEN'S FIELD HOCKEY / LACROSSE STYLES



TANK OR RACERBACK JERSEY
(SB58W / SB55W)

- CREW NECK & V-NECK OPTION AVAILABLE
- STRAIGHT HEMMED BOTTOM
- SINGLE COLOR BINDING OPTION FOR ARMHOLES



TANK OR RACERBACK JERSEY
(SB58W / SB55W)

- CREW NECK & V-NECK OPTION AVAILABLE
- STRAIGHT HEMMED BOTTOM
- SINGLE COLOR BINDING OPTION FOR ARMHOLES



RACERBACK REVERSIBLE TANK
(WL66W)

- TWO PANELS WITH ROUND NECK
- SERGED SEAM CONSTRUCTION
- STRAIGHT HEMMED BOTTOM
- SINGLE OR DOUBLE PLY REVERSIBLE AVAILABLE



CHAMPION FIT RACERBACK
(WL65W)

- RACERBACK WITH ARMHOLE FACING
- 3" SEWN-IN SIDE PANEL (NFHS LEGAL)
- PIPING AVAILABLE UPON REQUEST (NOT NFHS LEGAL)



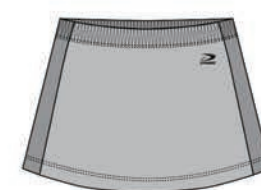
CHAMPION FIT SKIRT
(WL14W)

- SKIRT OR SKORT - INCLUDING COMPRESSION SHORTS (OPTIOINAL)
- PIPING AVAILABLE UPON REQUEST
- 2" FLAT COVERED ELASTIC WAISTBAND
- CURVED SIDE SEAMS



TWO PANEL SKIRT
(WL15W)

- 2-PANEL SKIRT WITH STRAIGHT SIDE SEAMS
- 1" COVERED, GATHERED, ELASTIC WAISTBAND



SKIRT WITH SIDE PANELS
(WL16W)

- SKIRT OR SKORT - INCLUDING COMPRESSION SHORTS OPTIONS AVAILABLE
- 3" SIDE PANELS
- 1" COVERED, GATHERED, ELASTIC WAISTBAND

STYLE OPTIONS | CHOOSE FROM MODERNIZED TANK AND SKIRT CUTS THAT ARE DESIGNED TO STAY TRUE TO THEIR FORM WHILE REMAINING PLIABLE AND FLEXIBLE FOR THE PLAYER.

UNDERCUT
(WL65W)
CHAMPION FIT
RACERBACK

COLOR 1:
ROYAL

COLOR 2:
SKY

COLOR 3:
NAVY



PERFORMER

(WL66W)
REVERSIBLE
RACERBACK
JERSEY

(WL16W)
SKIRT WITH
SIDE PANEL



COLOR 1: WHITE
COLOR 2: FOREST
COLOR 3: NAVY

COLOR 1: FOREST
COLOR 2: WHITE
COLOR 3: NAVY

SPLASH

(WL65W)
CHAMPION FIT
RACERBACK

(WL14W)
CHAMPION FIT
SKIRT



COLOR 1: WHITE
COLOR 2: NAVY
COLOR 3: SKY

UNDERCUT
(WL16W)
SKIRT WITH
SIDE PANEL

COLOR 1:
ROYAL

COLOR 2:
SKY

COLOR 3:
NAVY



TIDE

(WL65W)
CHAMPION FIT
RACERBACK

(WL14W)
CHAMPION FIT
SKIRT



COLOR 1: GOLD
COLOR 2: ORANGE
COLOR 3: ORANGE

IN-

(SB55W)
RACERBACK
JERSEY

(WL15W)
TWO PANEL
SKIRT



COLOR 1: GOLD
COLOR 2: PURPLE
COLOR 3: BLACK

CUSTOMIZE IT | THESE STYLES AND MORE ARE AVAILABLE AT WWW.DYNAMICTEAMSPORTS.COM TO BE COMPLETELY CUSTOMIZED TO MATCH YOUR VISION



DYNAMIC

TRACK & FIELD

“ THE SKY HAS NO LIMITS. NEITHER DO I. ” - USIAN BOLT

Persistence/ noun /per'sistens

Unyielding continuance in a course of action, against all odds and in spite of difficulty. A continued, prolonged existence.



TRACK & FIELD | Track and field athletes are out pounding the pavement year-round. Dynamic uniforms are designed to be durable against all temperatures and weathers and last through the year-round nature of competitive running.

MEN'S TRADITIONAL (TR056)

TANK CUT / SERGED SEAM CONSTRUCTION / STRAIGHT BOTTOM

MEN'S TRADITIONAL SHORTS (TR057)

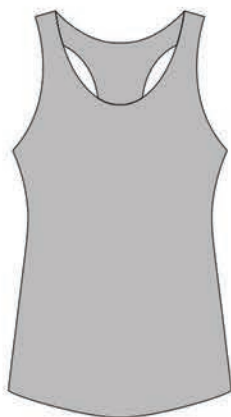
4-PANEL SHORT / COVERED ELASTIC DRAWSTRING WAIST / 3.5" INSEAM
LINER INCLUDED / SLITS AT SIDE SEAM

STYLE NAME:

"TRINITY"

Our Champion Fit jersey tops display a sleek, racerback construction, are finished with a double-needle stitch to ensure quality and feature a top back yoke to accommodate dual fabric options.

WOMEN'S TRACK



WOMEN'S CHAMPION FIT
(TR08W)

- RACERBACK, ATHLETIC FIT
- BACK YOKE; CAN BE MESH FABRIC
- FLATLOCK SEAM CONSTRUCTION
- CURVED HEMMED BOTTOM



WOMEN'S TRADITIONAL
(TR09W)

- TANK CUT, RELAXED FIT
- SERGED SEAM CONSTRUCTION
- STRAIGHT HEMMED BOTTOM



**WOMEN'S CHAMPION FIT
SHORTS** (TR09W)

- OVERLAP AT SIDE SEAMS
- FOR INCREASED MOBILITY
- COVERED ELASTIC
- DRAWSTRING WAIST
- 3.5" INSEAM
- LINER INCLUDED



**WOMEN'S TRADITIONAL
SHORTS** (TR57W)

- 4-PANEL SHORT
- COVERED ELASTIC
- DRAWSTRING WAIST
- 3.5" INSEAM
- LINER INCLUDED
- SLITS AT SIDE SEAMS

STYLE OPTIONS | DESIGNS SHOULDN'T BE LIMITED TO JUST JERSEYS. PAIR YOUR TRACK TOP WITH A FULLY CUSTOM BOTTOM, AVAILABLE WITH A LINER UPON REQUEST.

MEN'S TRACK STYLES



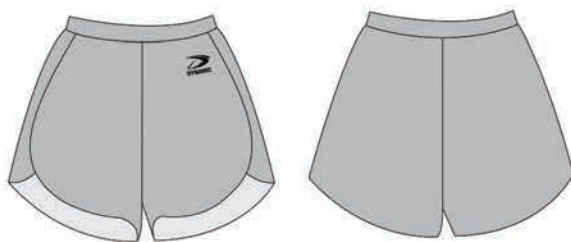
MEN'S CHAMPION FIT
(TR007)

- RACERBACK, ATHLETIC FIT
- BACK YOKE: CAN BE MASH FABRIC
- FLATLOCK SEAM CONSTRUCTION
- CURVED HEMMED BOTTOM



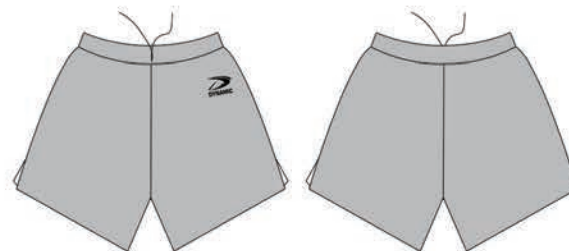
MEN'S TRADITIONAL
(TR056)

- TANK CUT, RELAXED FIT
- SERGED SEAM CONSTRUCTION
- STRAIGHT HEMMED BOTTOM



MEN'S CHAMPION FIT SHORT
(TR010)

- OVERLAP AT SIDE SEAMS FOR INCREASED MOBILITY
- COVERED ELASTIC DRAWSTRING WAIST
 - 3.5" INSEAM
- LINER INCLUDED



MEN'S TRADITIONAL SHORTS
(TR057)

- 4-PANEL SHORT
- COVERED ELASTIC DRAWSTRING WAIST
 - 3.5" INSEAM
- LINER INCLUDED
- SLITS AND SIDE SEAMS

STYLE OPTIONS | CUSTOMIZE YOUR TEAM UNIFORM USING OUR NEW STYLE MODIFIER.
SELECT COLORS AND PATTERNS THAT BEST REPRESENT YOUR TEAMS LOOK

DIAMOND
(BS531)
FULL BUTTON
RAGLAN

COLOR 1:
BLACK

COLOR 2:
RED

COLOR 3:
WHITE



FELIX
(TR007/TR08W)
CHAMPION FIT JERSEY

(TR010/TR09W)
CHAMPION FIT SHORTS



COLOR 1: FOREST
COLOR 2: NAVY
COLOR 3: WHITE



LEWIS
(TR007/TR08W)
CHAMPION FIT JERSEY

(TR010/TR09W)
CHAMPION FIT SHORTS



COLOR 1: ROYAL
COLOR 2: ORANGE
COLOR 3: WHITE

DIAMOND
(BS610)
FULL LENGTH
PANTS

COLOR 1:
RED

COLOR 2:
BLACK

COLOR 3:
BLACK



LOCKPORT
(TR056/TR056W)
TRADITIONAL FIT
JERSEY

(TR057/TR57W)
TRADITIONAL FIT
JERSEY



COLOR 1: GOLD
COLOR 2: BLACK



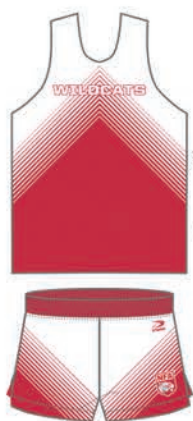
**ROAD
RUNNER**
(TR056/TR056W)
TRADITIONAL FIT
JERSEY

(TR057/TR57W)
TRADITIONAL FIT
SHORTS



COLOR 1: NAVY
COLOR 2: NAVY

CUSTOMIZE IT | THESE STYLES AND MORE ARE AVAILABLE AT WWW.DYNAMICTEAMSPORTS.COM
TO BE COMPLETELY CUSTOMIZED TO MATCH YOUR VISION



TRINITY
(TR056/TR056W)
TRADITIONAL FIT
JERSEY
(TR057/TR57W)
TRADITIONAL FIT
SHORTS

COLOR 1: COLOR 2:
WHITE RED



OWENS
(TR007/TR08)
CHAMPION FIT JERSEY
(TR010/TR09)
CHAMPION FIT SHORTS

COLOR 1: COLOR 2: COLOR 3: COLOR 4:
NAVY WHITE RED TO WHITE WHITE TO RED TO WHITE



SPLITS
(TR007/TR08W)
CHAMPION FIT JERSEY
(TR010/TR09W)
CHAMPION FIT SHORTS

COLOR 1: COLOR 2:
HUNTER LIME



FINISHER
(TR007/TR08W)
CHAMPION FIT JERSEY
(TR010/TR09W)
CHAMPION FIT SHORTS

COLOR 1: COLOR 2:
RED CARDINAL



STRIDE
(TR056/TR056W)
TRADITIONAL FIT
JERSEY
(TR057/TR57W)
TRADITIONAL FIT
SHORTS

COLOR 1: COLOR 2:
CARDINAL





DYNAMIC

VOLLEYBALL

“ I MUST GIVE 100% IN EVERY PRACTICE, GAME, WEIGHT TRAINING, VIDEO OR ANYTHING I DO RELATED
TO SPORTS AND LIFE. ”- LLOYD BALL

POWER / noun / 'pou(e)r/

The application of great strength. A supernatural force. The ability to influence the attitudes and beliefs of those around you.



VOLLEYBALL | Our uniforms focus on a perfect fit, flexibility and comfort so its one last thing the players have to think about when they hit the court.

SLEEVELESS JERSEY (VB180)

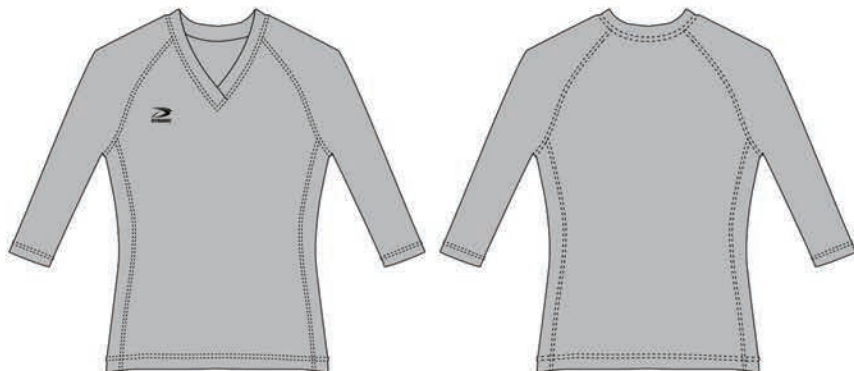
RAGLAN SLEEVES / CREW NECK PERFORMANCE FIT
/ STRAIGHT HEMMED BOTTOM

FULL CUT SHORT (VB603)

2" COVERED ELASTIC WAISTBAND WITH DRAWSTRING /
7" INSEAM LENGTH

STYLE NAME:
“BLOCK” | Dynamic's men's volleyball products boast unlimited custom designs and an array of top-notch, light weight fabric options to keep you living above the net at match point.

WOMAN'S VOLLEYBALL



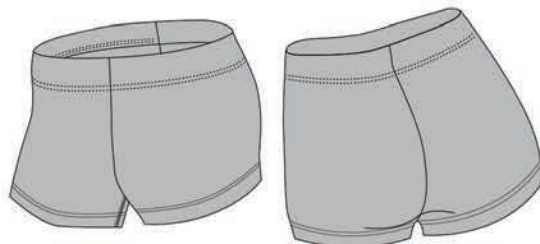
700 SERIES LONG SLEEVE
(VB71W)

- RAGLAN SLEEVES WITH ATHLETIC FIT
- 3" SIDE PANEL CAN BE MESH FABRIC
- FLATLOCK SEAM CONSTRUCTION



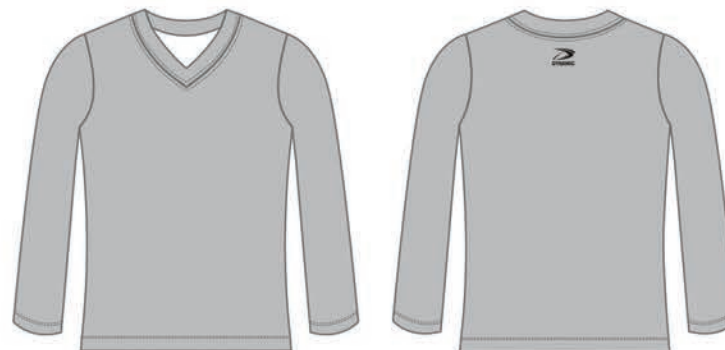
700 SERIES SHORT SLEEVE
(VB70W)

- RAGLAN SLEEVES WITH ATHLETIC FIT
- 3" SIDE PANEL CAN BE MESH FABRIC
- FLATLOCK SEAM CONSTRUCTION



COMPRESSION SHORT
(VB21W)

- AVAILABLE IN 2.5" OR 4" INSEAM
- 3" SELF FABRIC WAIST WITH 1/4" ELASTIC, GUSSET
- ONLY AVAILABLE IN STRETCH TEC FABRIC

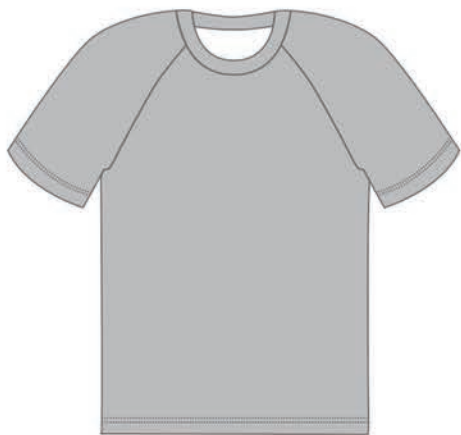


PREMIER JERSEY
(VB20W)

- SET IN SLEEVES WITH ATHLETIC FIT
- CREW NECK OR V-NECK OPTION
- FLATLOCK SEAM CONSTRUCTION

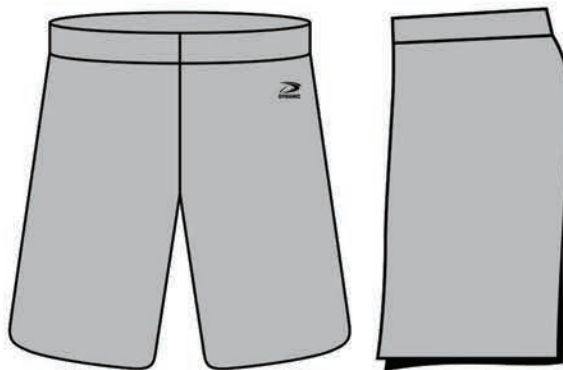
STYLE OPTIONS | JERSEYS ARE AVAILABLE IN SLEEVELESS, SHORT SLEEVE, AND LONG SLEEVE OPTIONS, ALL CUSTOMIZABLE WITH A V-NECK OR CREW NECK FINISH.

MEN'S VOLLEYBALL STYLES



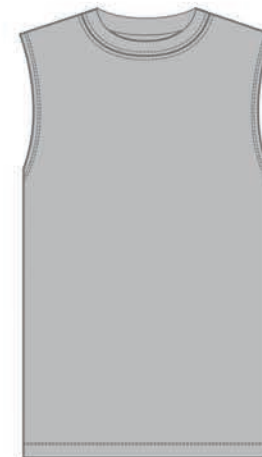
MEN'S RAGLAN VOLLEYBALL
(VB175)

- RAGLAN SLEEVES
- CREW NECK, PERFORMANCE FIT
- STRAIGHT HEMMED BOTTOM
- SERGED SEAM CONSTRUCTION



MEN'S FULL CUT SHORT
(BB603)

- IDEAL FOR LARGE DESIGN
- 2" COVERED ELASTIC WAISTBAND WITH DRAWSTRING
- 7" INSEAM LENGTH



MEN'S SLEEVELESS VOLLEYBALL
(VB180)

- RAGLAN SLEEVES
- CREW NECK, PERFORMANCE FIT
- STRAIGHT HEMMED BOTTOM
- SERGED SEAM CONSTRUCTION

STYLE OPTIONS I

DON'T FORGET CUSTOMIZED SHORTS TO GO WITH YOUR SELECTED JERSEY CUT. AVAILABLE IN MULTIPLE INSEAM LENGTHS AND THE OPTION FOR SIDE PANELS OR POCKETS IN OUR MEN'S CUTS.

BUMP
(VB20W)
PREMIER
JERSEY

COLOR 1:
HUNTER

COLOR 2:
85% HUNTER

COLOR 3:
LIME

COLOR 4:
WHITE



ASSIST

(VB70W)
700 SERIES SHORT
SLEEVE JERSEY

(VB21W)
COMPRESSION SHORTS
- 2.5"



COLOR 1: SKY
COLOR 2: NAVY
COLOR 3: WHITE



BLOCKER

(VB71W)
700 SERIES LONG
SLEEVE JERSEY

(VB21W)
COMPRESSION SHORTS
- 2.5"



COLOR 1: TEAL
COLOR 2: BLACK
COLOR 3: WHITE

BUMP
(VB21W)
COMPRESSION
SHORTS - 2.5"

COLOR 1:
HUNTER

COLOR 2:
85% HUNTER

COLOR 3:
LIME

COLOR 4:
WHITE



NET

(VB70W)
700 SERIES SHORT
SLEEVE JERSEY

(VB21W)
COMPRESSION SHORTS
- 2.5"



COLOR 1: PURPLE
COLOR 2: GOLD
COLOR 3: WHITE



BUMP

(VB20W)
PREMIER
JERSEY
(VB21W)
COMPRESSION SHORTS
- 2.5"



COLOR 1: HUNTER
COLOR 2: 85% HUNTER
COLOR 3: LIME
COLOR 4: WHITE

CUSTOMIZE IT | THESE STYLES AND MORE ARE AVAILABLE AT WWW.DYNAMICTEAMSPORTS.COM TO BE COMPLETELY CUSTOMIZED TO MATCH YOUR VISION.

BLOCK
(BS531)
SLEEVELESS
THROWBACK

COLOR 1:
NAVY

COLOR 2:
RED

COLOR 3:
WHITE



JOUST
(VB175)
SLEEVELESS THROW-
BACK

(BB603)
7" FULL CUT
SHORTS

COLOR 1:
FOREST

COLOR 2:
WHITE

COLOR 3:
BLACK



SPIKE
(VB175)
RAGLAN JERSEY

(BB603)
7" FULL CUT
SHORTS

COLOR 1:
NAVY

COLOR 2:
ROYAL

COLOR 3:
GOLD



BLOCK
(BS610)
7" FULL CUT
SHORTS

COLOR 1:
NAVY

COLOR 2:
RED

COLOR 3:
WHITE



RALLY
(VB175)
RAGLAN JERSEY

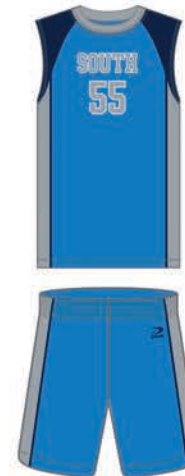
(BB603)
7" FULL CUT
SHORTS

COLOR 1:
WHITE

COLOR 2:
BLACK

COLOR 3:
75% BLACK

COLOR 4:
50% BLACK



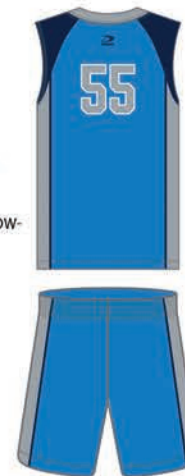
SETTER
(VB175)
SLEEVELESS THROW-
BACK

(BB603)
7" FULL CUT
SHORTS

COLOR 1:
ROYAL

COLOR 2:
NAVY

COLOR 3:
SILVER





DYNAMIC

WRESTLING

“ ONCE YOU’VE WRESTLED, EVERYTHING ELSE IN LIFE IS EASY ” - DAN GABLE



COURAGE / noun / kerij

The will to do something that scares you. Strength in the face of pain.

WRESTLING | Take down the competition in our fully sublimated wrestling singlets and sets. Reinforced leg bands and moisture-wicking technology keep players cool, dry and secure as they hit the mat.

● **MENS TRADITIONAL FIT SINGLET (WR301)**

COMPRESSION FIT / ELASTIC GRIPPER LEG BAND / STRAIGHT HEMMED BOTTOM
FLATLOCK SEAM CONSTRUCTION / NECK AND ARMHOLE BINDING

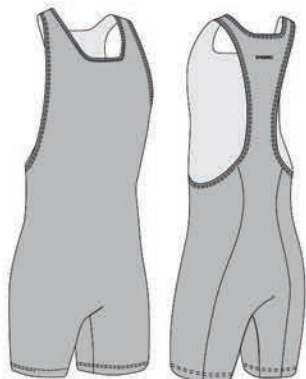
● **SUBLIMATED PRINTING.**

STYLE NAME:

“BOUT”

| Available for men and women in both our signature Champion Fit with a racerback cut and in a traditional fit with a scooped back.

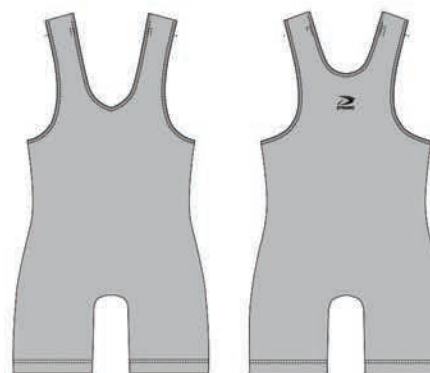
MEN'S WRESTLING STYLES



MEN'S TRADITIONAL FIT SINGLET

(WR300)

- RACERBACK CUT
- ELASTIC GRIPPER LEG BAND
- FLATLOCK SEAM CONSTRUCTION
- NECK AND ARMHOLE BINDING
- SIDE SEAM OFFSET BACK FOR OBLIQUE LOGO PLACEMENT



MEN'S CHAMPION FIT

(WR301)

- COMPRESSION FIT
- ELASTIC GRIPPER LEG BAND
- STRAIGHT HEMMED BUTTON
- FLATLOCK SEAM CONSTRUCTION
- NECK AND ARMHOLE BINDING



RAGLAN COMPRESSION SHIRT W/ TAIL

(WR30W)

- COMPRESSION FIT
- CREWNECK ONLY
- ELASTIC GRIPPER LEG BAND
- STRAIGHT HEMMED BOTTOM
- FLATLOCK SEAM CONSTRUCTION



FIGHT SHORTS

(TR007)

- RACERBACK, ATHLETIC FIT
- BACK YOKE: CAN BE MASH FABRIC
- FLATLOCK SEAM CONSTRUCTION
- CURVED HEMMED BOTTOM

STYLE OPTIONS | CUSTOMIZE YOUR TEAM UNIFORM USING OUR NEW STYLE MODIFIER.
SELECT COLORS AND PATTERNS THAT BEST REPRESENT YOUR TEAMS LOOK

WHIZZER
(WR302)
FIGHT SHIRT

COLOR 1:
BLACK

COLOR 2:
CARDINAL

COLOR 3:
BLACK

COLOR 4:
WHITE



COLOR 1:
GOLD

COLOR 2:
ROYAL

COLOR 3:
WHITE



COLOR 1:
ORANGE

COLOR 2:
BLACK

COLOR 3:
WHITE

WHIZZER
(WR303)
FIGHT SHORT

COLOR 1:
BLACK

COLOR 2:
CARDINAL

COLOR 3:
BLACK

COLOR 4:
WHITE



COLOR 1:
BLACK

COLOR 2:
RED

COLOR 3:
WHITE



COLOR 1:
NAVY

COLOR 2:
VEGAS

COLOR 3:
WHITE

COLOR 4:
SILVER

CUSTOMIZE IT | THESE STYLES AND MORE ARE AVAILABLE AT WWW.DYNAMICTEAMSPORTS.COM TO BE COMPLETELY CUSTOMIZED TO MATCH YOUR VISION.

A hockey player in a white jersey with red and black accents is skating on ice. The jersey has the number 27 and the word "FINGER" visible. The player is wearing a dark helmet, blue gloves, and ice skates. The background is dark with white curved lines suggesting motion. The word "DYNAMIC" is written in a large, stylized, glowing blue font across the center of the image.

DYNAMIC

75

2020 DYNAMIC TEAM SPORTS LLC. ALL RIGHTS RESERVED

HOCKEY

"THIS IS YOUR MOMENT. YOU'RE MEANT TO BE HERE" - HERB BROOKS

GUTS/plural noun /gət/

Instinctive action based on emotional knowing rather than on considered thought. Personal courage and determination. Toughness of character.



HOCKEY | No one knows hockey better than Canadians. Our Canadian-made uniforms are constructed and tested by expert players, focused on the security of the garments over padding and on designs neverbefore seen on ice.

TRADITIONAL V-NECK (HK701)

V-NECK WITH DOUBLE LAYER / REINFORCED SHOULDER YOKE /
SERGED SEAM CONSTRUCTION

SUBLIMATED HOCKEY SHELL (HK740)

FULLY SUBLIMATED SHELL / RIBBED GUSSET / CENTER FRONT BUCKLE
AND BUILT IN BELT

STYLE NAME:

“DASHER”

Two-ply shoulder finish comes standard, and double elbows are available upon request for additional durability.

MEN'S HOCKEY STYLES



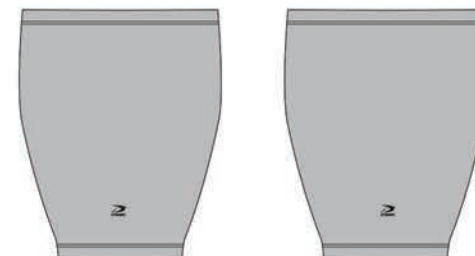
TRADITIONAL V-NECK
(HK701)

- V-NECK WITH DOUBLE LAYER REINFORCED SHOULDER YOKE
- SERGED SEAM CONSTRUCTION



GOALIE V-NECK
(HK703)

- V-NECK WITH DOUBLE LAYER REINFORCED SHOULDER YOKE
- SERGED SEAM CONSTRUCTION
- BODY LENGTH SHORTENED
- INCREASED SLEEVE WIDTH



ICE HOCKEY SOCKS W/ VELCRO

- 1" COVERED ELASTIC AT TOP EDGE
- VELCRO AT CENTER FRONT AND BACK TOP EDGE



TRADITIONAL LACE NECK
(HK702)

- LACE NECK WITH DOUBLE LAYER REINFORCED SHOULDER YOKE
- SERGED SEAM CONSTRUCTION



GOALIE LACE NECK
(HK704)

- LACE NECK WITH DOUBLE LAYER REINFORCED SHOULDER YOKE
- SERGED SEAM CONSTRUCTION
- BODY LENGTH SHORTENED
- INCREASED SLEEVE WIDTH



SUBLIMATED HOCKEY SHELL

- FULLY SUBLIMATED SHELL
- RIBBED GUSSET.
- CENTER FRONT BUCKLE AND BUILT IN BELT

STYLE OPTIONS | FULLY SUBLIMATED MATCHING SOCKS AND PANT SHELLS AVAILABLE IN YOUTH AND ADULT SIZING, COMPLETE WITH VELCRO PATCHES TO HOLD GARMENTS IN PLACE.

DANGLE
(HK702)
TRADITIONAL
LACE NECK

COLOR 1:
CAMO



COLOR 2:
NAVY



COLOR 3:
WHITE



DANGLE
(HK740)
ICE HOCKEY
SOCKS

COLOR 1:
CAMO



COLOR 2:
NAVY



COLOR 3:
WHITE



WINGER

(HK702)
TRADITIONAL
LACE NECK



COLOR 1: 20% VEGAS
COLOR 2: RED
COLOR 3: VEGAS



DASHER

(HK701)
TRADITIONAL V-NECK



COLOR 1: RED
COLOR 2: NAVY
COLOR 3: WHITE



BLUELINER

(HK701)
TRADITIONAL V-NECK



COLOR 1: BLACK
COLOR 2: ORANGE
COLOR 3: WHITE



FACEOFF

(HK702)
TRADITIONAL
LACE NECK



COLOR 1: SILVER
COLOR 2: BLACK



CUSTOMIZE IT | THESE STYLES AND MORE ARE AVAILABLE AT WWW.DYNAMICTEAMSPORTS.COM
TO BE COMPLETELY CUSTOMIZED TO MATCH YOUR VISION



S E T T H E S T A N D A R D

2020
— C A T A L O G —

TEL: 1.800.437.6223 / EMAIL: INFO@DYNAMICTEAMSPORTS.COM / DYNAMICTEAMSPORTS.COM

* Please contact our sales team for any assistance regarding uniform sizing, availability and or uniform pricing.